

RATIONALE

1. ERROR CORRECTIONS.
2. NOTE 11: NEW WORDING FOR PROCUREMENT NOTE.
3. WARNING NOTE ADDED FOR RESTRICTED MATERIAL.
4. THE 5 IN TABLE 1 AND IN NOTE 5 IS CHANGED TO /5/.

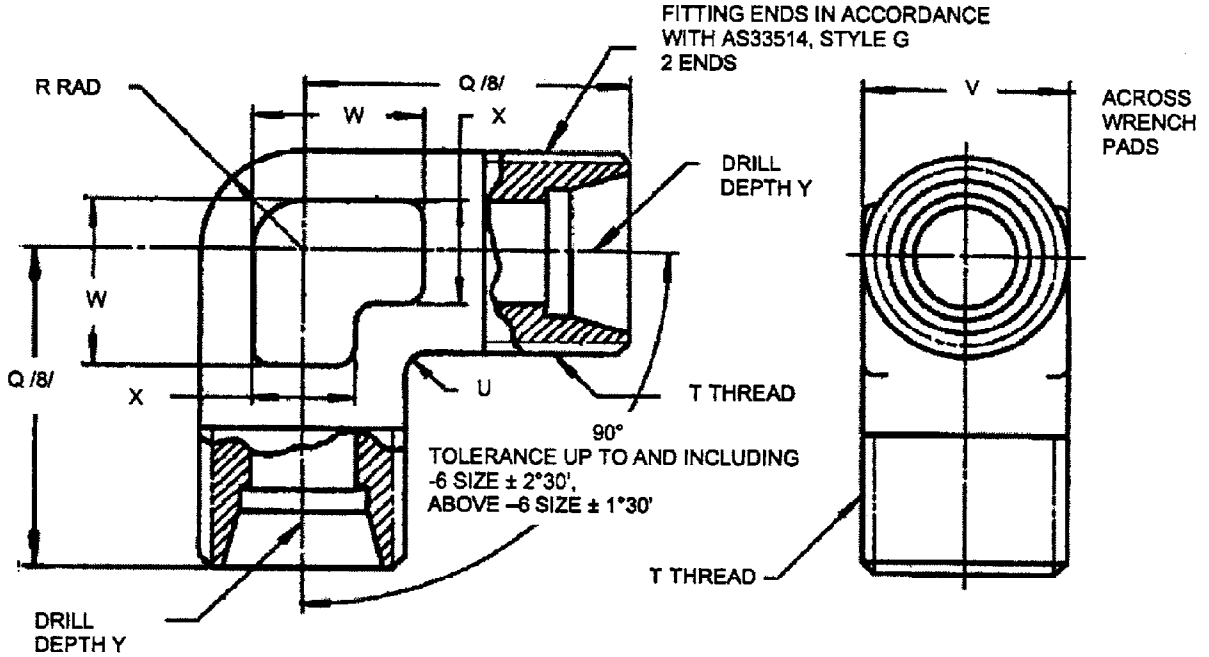
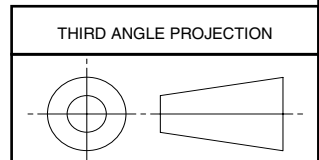


FIGURE 1 - ELBOW, FLARELESS TUBE, 90°



SAE Technical Standards Board Rules provide that: "This report is published by SAE to advance the state of technical and engineering sciences. The use of this report is entirely voluntary, and its applicability and suitability for any particular use, including any patent infringement arising therefrom, is the sole responsibility of the user." SAE reviews each technical report at least every five years at which time it may be reaffirmed, revised, or cancelled. SAE invites your written comments and suggestions.

ISSUED 1998-03 REAFFIRMED 2007-07 REVISED 2008-06


CUSTODIAN: SAE G-3/G-3B		PROCUREMENT SPECIFICATION: /11/ AS18280	
 An SAE International Group		<b>AEROSPACE STANDARD</b>	
		ELBOW, FLARELESS TUBE, 90°	
		<b>SAE AS21904C</b> SHEET 1 OF 4	

TABLE 1A - DIMENSIONS G-V

DASH NO. /5/	NOMINAL TUBE SIZE	T THREAD AS8879	Q /8/			
			+ .047 - .000	R RAD	U RAD	V
-2	.125	.3125-24 UNJF-3A	.750	.156	.063	.313
-3	.188	.3750-24 UNJF-3A	.813	.188	.063	.375
-4	.250	.4375-20 UNJF-3A	.875	.219	.063	.438
-5	.313	.5000-20 UNJF-3A	.938	.250	.063	.500
-6	.375	.5625-18 UNJF-3A	1.031	.281	.094	.563
-8	.500	.7500-16 UNJF-3A	1.250	.375	.094	.750
-10	.625	.8750-14 UNJF-3A	1.406	.438	.094	.875
-12	.750	1.0625-12 UNJ-3A	1.563	.531	.094	1.063
-16	1.000	1.3125-12 UNJ-3A	1.719	.656	.125	1.313
-20	1.250	1.6250-12 UNJ-3A	1.875	.813	.125	1.625
-24	1.500	1.8750-12 UNJ-3A	2.000	.938	.125	1.875
-32	2.000	2.5000-12 UNJ-3A	2.438	1.250	.250	2.563

TABLE 1B - DIMENSIONS W-Y

DASH NO. /5/	W APPROX	X APPROX	Y + .047 - .000	WEIGHT, LB/EA, APPROX, REF.		
				STEEL	AL ALLOY	TI ALLOY
-2	.313	.188	.781	.040	.014	.023
-3	.313	.250	.844	.056	.020	.032
-4	.375	.250	.922	.062	.022	.035
-5	.500	.313	.984	.086	.031	.049
-6	.500	.313	1.063	.104	.037	.060
-8	.625	.438	1.313	.191	.064	.110
-10	.750	.438	1.469	.258	.087	.148
-12	.875	.500	1.625	.402	.135	.231
-16	1.063	.625	1.844	.535	.200	.308
-20	1.250	.750	2.000	.792	.265	.456
-24	1.438	.875	2.313	1.262	.463	.728
-32	2.000	1.188	2.688	3.062	1.125	1.766

## NOTES:

## NOTICE

THIS DOCUMENT REFERENCES A PART WHICH CONTAINS CADMIUM AS A PLATING MATERIAL. CONSULT LOCAL OFFICIALS IF YOU HAVE QUESTIONS CONCERNING CADMIUM'S USE.

## 1. MATERIAL:

SEE PROCUREMENT SPECIFICATION.  
 ALLOY STEEL  
 ALUMINUM ALLOY  
 CORROSION RESISTANT STEEL  
 TITANIUM ALLOY

## 2. FINISH: SEE PROCUREMENT SPECIFICATION

## 3. BREAK EDGES .003 TO .015 UNLESS OTHERWISE SPECIFIED.

4. DIMENSIONS ARE IN INCHES. UNLESS OTHERWISE SPECIFIED, TOLERANCES: DECIMALS  $\pm 0.016$ , ANGLES  $\pm 0^{\circ}30'$ .